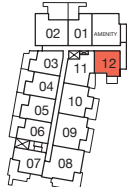


# portico.

A

1 BEDROOM + 1 BATH

Interior: 561 SF | Exterior: 64 SF | Total: 626 SF



LEVEL 1



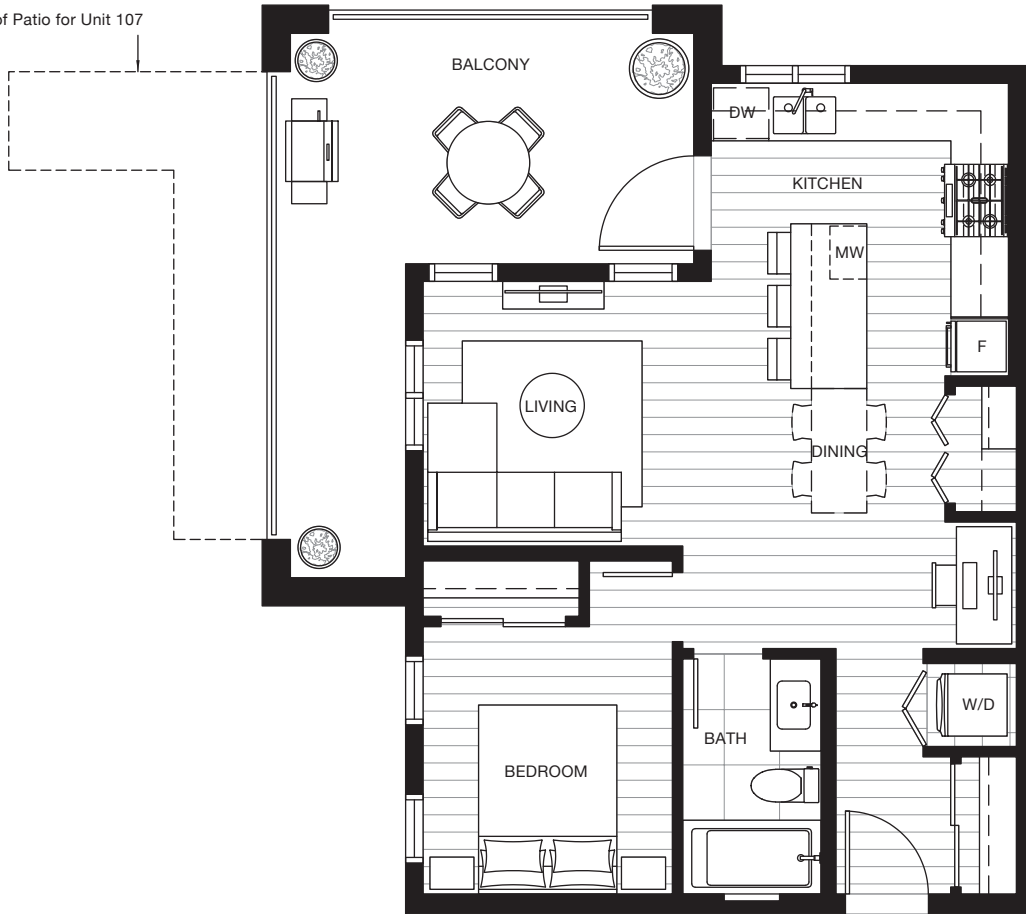
Developer reserves the right to make modifications to the floorplans, areas, unit numbers, and/or specifications without notice. Actual floorplans may be mirror image or have minor variations from the illustrations above. Views may include building architectural features/measurements are based on architectural areas and are not taken from the strata plan. This is not an offering for purchase. Any such offering can only be made with a Disclosure Statement. E&OE.

# portico.

## A1 1 BEDROOM + 1 BATH

Interior: 616 SF | Exterior: 181 - 304 SF | Total: 797 - 920 SF

Extent of Patio for Unit 107



LEVEL 2



LEVEL 1



Developer reserves the right to make modifications to the floorplans, areas, unit numbers, and/or specifications without notice. Actual floorplans may be mirror image or have minor variations from the illustrations above. Views may include building architectural features/measurements are based on architectural areas and are not taken from the strata plan. This is not an offering for purchase. Any such offering can only be made with a Disclosure Statement. E&OE.

# portico.

## B 1 BEDROOM + 1 BATH + DEN

Interior: 513 SF | Exterior: 107 - 114 SF | Total: 620 - 627 SF



LEVEL 6



LEVEL 5



Developer reserves the right to make modifications to the floorplans, areas, unit numbers, and/or specifications without notice. Actual floorplans may be mirror image or have minor variations from the illustrations above. Views may include building architectural features/measurements are based on architectural areas and are not taken from the strata plan. This is not an offering for purchase. Any such offering can only be made with a Disclosure Statement. E&OE.





# portico.

## B2 1 BEDROOM + 1 BATH + DEN

Interior: 554 - 563 SF | Exterior: 45 - 200 SF | Total: 599 - 763 SF

Extent of Patio for Unit 106

Extent of Balconies for Units  
210, 310 and 410



LEVEL 7



LEVEL 6



LEVEL 5



LEVEL 4



LEVEL 3



LEVEL 2



LEVEL 1

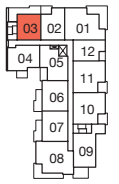
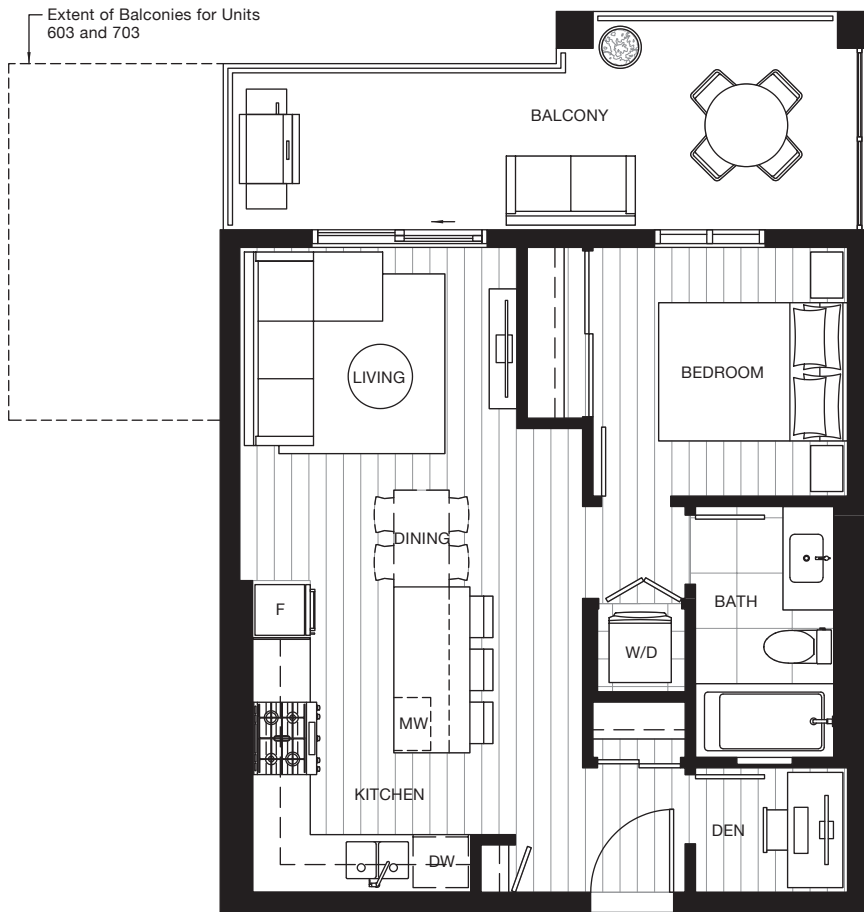


Developer reserves the right to make modifications to the floorplans, areas, unit numbers, and/or specifications without notice. Actual floorplans may be mirror image or have minor variations from the illustrations above. Views may include building architecture features/measurements are based on architectural areas and are not taken from the strata plan. This is not an offering for purchase. Any such offering can only be made with a Disclosure Statement. E&OE.

# portico.

## B3 1 BEDROOM + 1 BATH + DEN

Interior: 558 SF | Exterior: 149 - 275 SF | Total: 707 - 833 SF

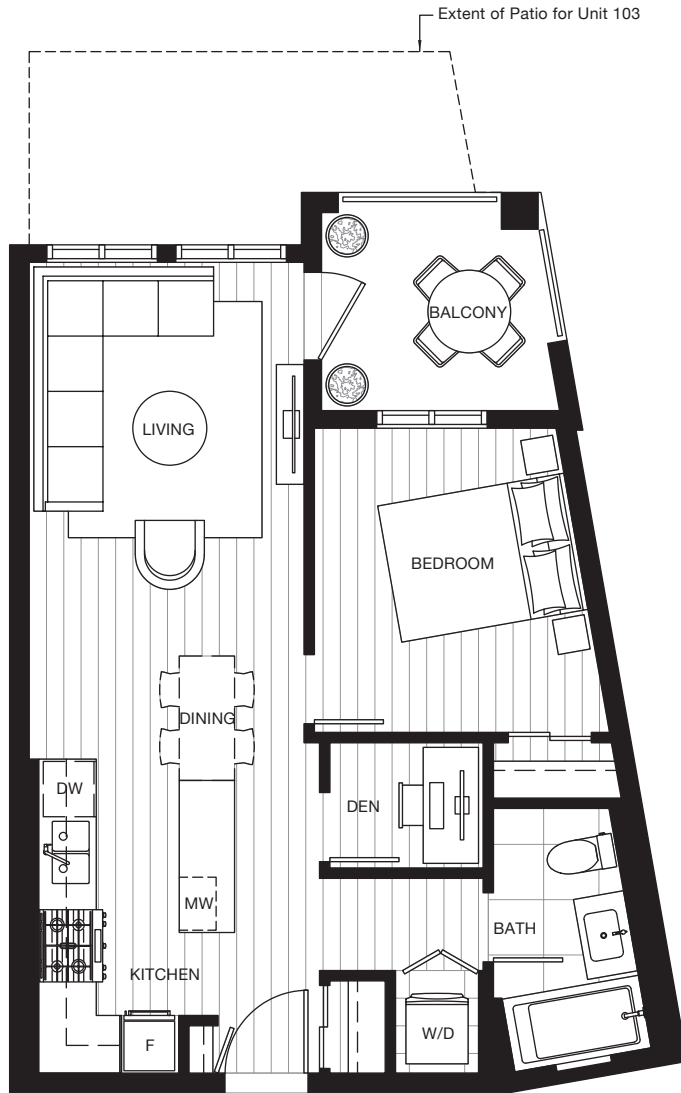


Developer reserves the right to make modifications to the floorplans, areas, unit numbers, and/or specifications without notice. Actual floorplans may be mirror image or have minor variations from the illustrations above. Views may include building architectural features/measurements are based on architectural areas and are not taken from the strata plan. This is not an offering for purchase. Any such offering can only be made with a Disclosure Statement. E&OE.

# portico.

## B4 1 BEDROOM + 1 BATH + DEN

Interior: 601 - 605 SF | Exterior: 56 - 160 SF | Total: 657 - 765 SF



LEVEL 4



LEVEL 3



LEVEL 2



LEVEL 1

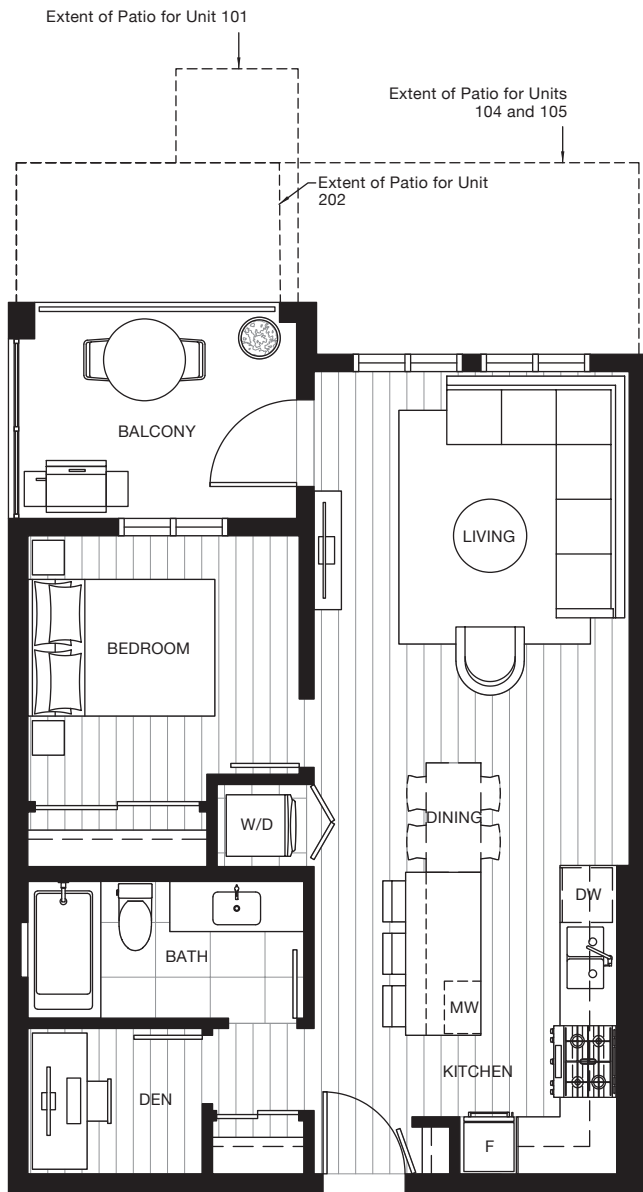


Developer reserves the right to make modifications to the floorplans, areas, unit numbers, and/or specifications without notice. Actual floorplans may be mirror image or have minor variations from the illustrations above. Views may include building architectural features/measurements are based on architectural areas and are not taken from the strata plan. This is not an offering for purchase. Any such offering can only be made with a Disclosure Statement. E&OE.

# portico.

## B5 1 BEDROOM + 1 BATH + DEN

Interior: 633 - 644 SF | Exterior: 72 - 223 SF | Total: 705 - 867 SF



Developer reserves the right to make modifications to the floorplans, areas, unit numbers, and/or specifications without notice. Actual floorplans may be mirror image or have minor variations from the illustrations above. Views may include building architectural features/measurements are based on architectural areas and are not taken from the strata plan. This is not an offering for purchase. Any such offering can only be made with a Disclosure Statement. E&OE.



LEVEL 7



LEVEL 6



LEVEL 5



LEVEL 4



LEVEL 3



LEVEL 2



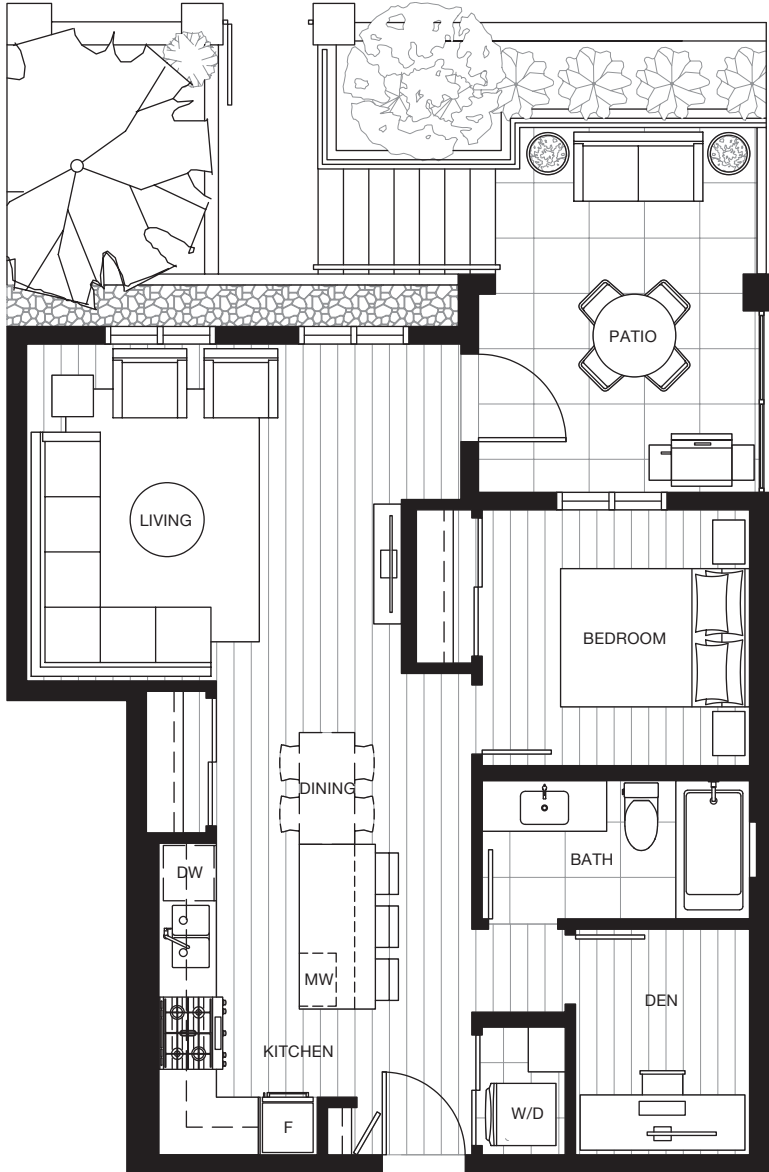
LEVEL 1





# portico.

**B6** 1 BEDROOM + 1 BATH + DEN  
 Interior: 690 SF | Exterior: 185 SF | Total: 875 SF



LEVEL 2

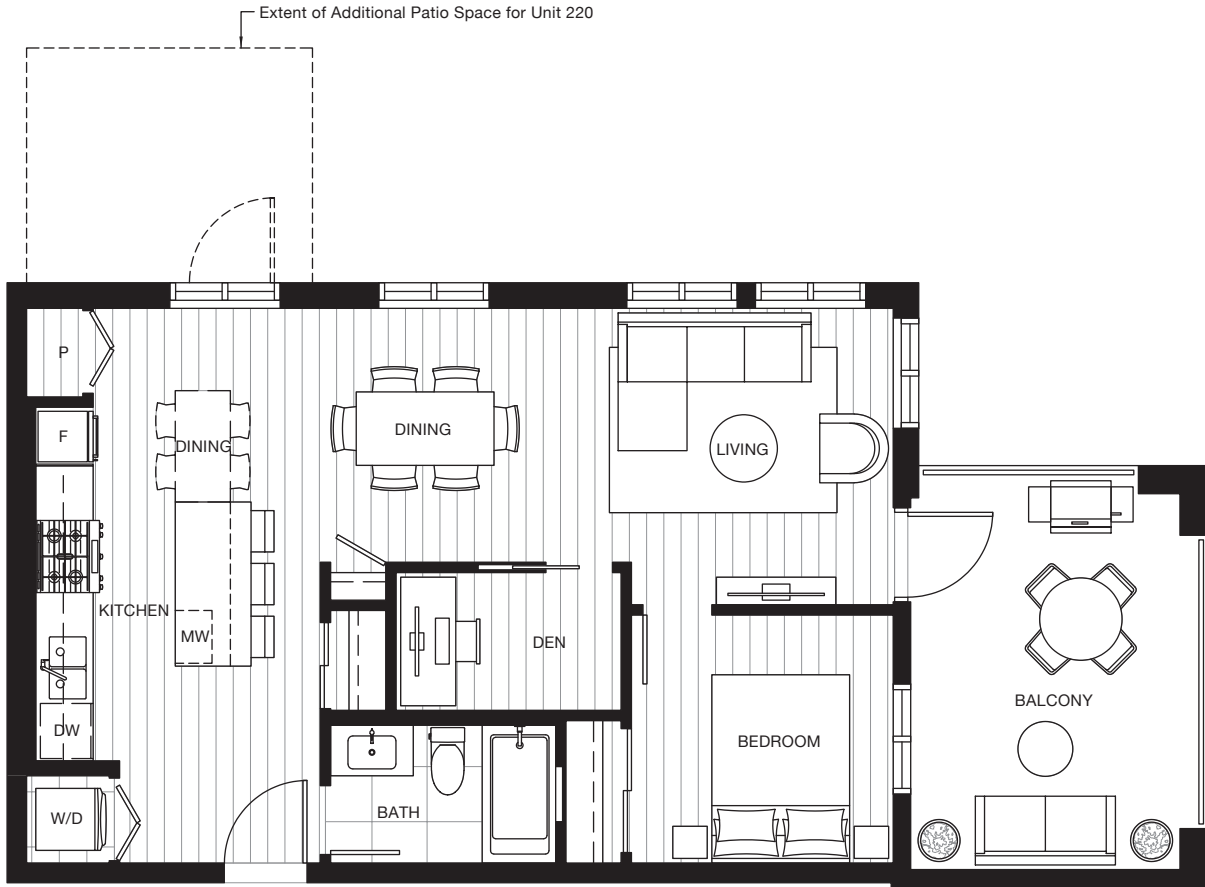


Developer reserves the right to make modifications to the floorplans, areas, unit numbers, and/or specifications without notice. Actual floorplans may be mirror image or have minor variations from the illustrations above. Views may include building architectural features/measurements are based on architectural areas and are not taken from the strata plan. This is not an offering for purchase. Any such offering can only be made with a Disclosure Statement. E&OE.

# portico.

## B7 1 BEDROOM + 1 BATH + DEN

Interior: 690 SF | Exterior: 134 - 271 SF | Total: 824 - 961 SF



Developer reserves the right to make modifications to the floorplans, areas, unit numbers, and/or specifications without notice. Actual floorplans may be mirror image or have minor variations from the illustrations above. Views may include building architectural features/measurements are based on architectural areas and are not taken from the strata plan. This is not an offering for purchase. Any such offering can only be made with a Disclosure Statement. E&OE.

# portico.

## B8 1 BEDROOM + 1 BATH + DEN

Interior: 672 SF | Exterior: 80 - 92 SF | Total: 752 - 764 SF



LEVEL 6



LEVEL 5



LEVEL 4



LEVEL 3



LEVEL 2



LEVEL 1



Developer reserves the right to make modifications to the floorplans, areas, unit numbers, and/or specifications without notice. Actual floorplans may be mirror image or have minor variations from the illustrations above. Views may include building architectural features/measurements are based on architectural areas and are not taken from the strata plan. This is not an offering for purchase. Any such offering can only be made with a Disclosure Statement. E&OE.



# portico.

## B9 1 BEDROOM + 1 BATH + DEN

Interior: 677 - 678 SF | Exterior: 83 - 87 SF | Total: 760-765 SF



LEVEL 7



LEVEL 6



LEVEL 5



LEVEL 4



LEVEL 3



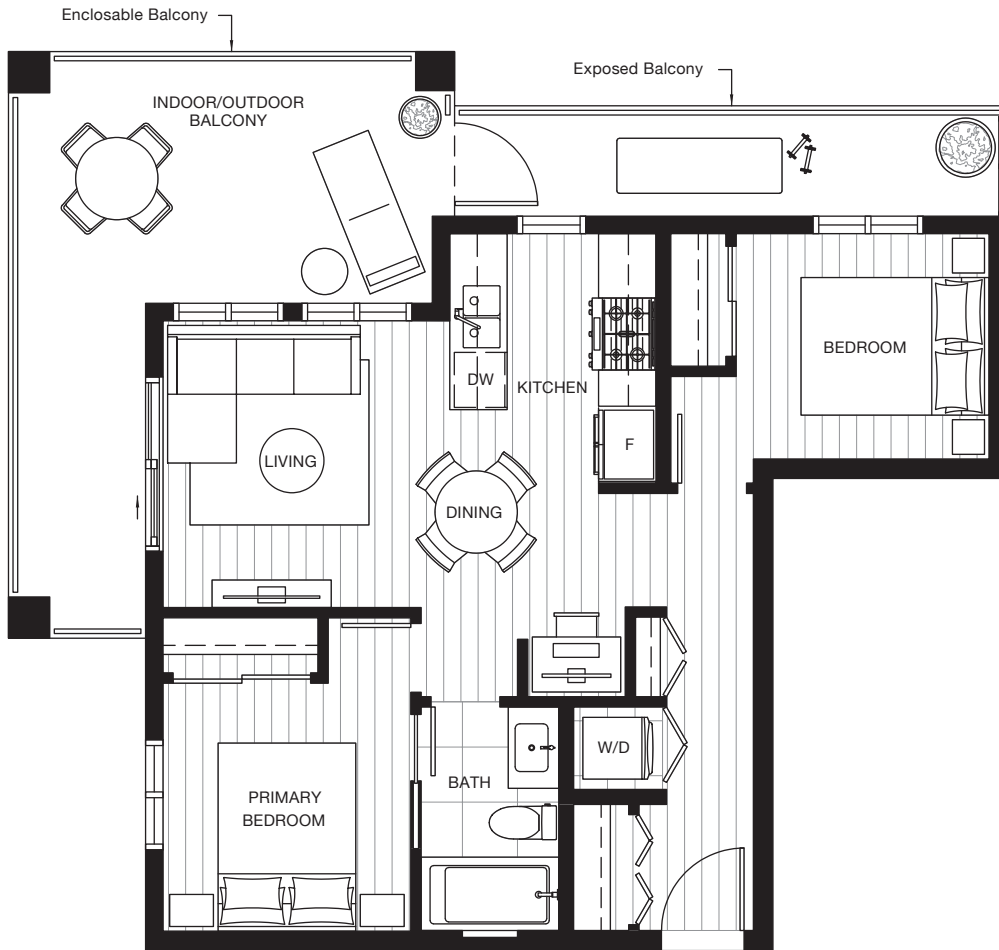
Developer reserves the right to make modifications to the floorplans, areas, unit numbers, and/or specifications without notice. Actual floorplans may be mirror image or have minor variations from the illustrations above. Views may include building architectural features/measurements are based on architectural areas and are not taken from the strata plan. This is not an offering for purchase. Any such offering can only be made with a Disclosure Statement. E&OE.



# portico.

## C 2 BEDROOM + 1 BATH

Interior: 642 SF | Exterior: 262 - 275 SF | Total: 904 - 917 SF



LEVEL 6



LEVEL 5



Developer reserves the right to make modifications to the floorplans, areas, unit numbers, and/or specifications without notice. Actual floorplans may be mirror image or have minor variations from the illustrations above. Views may include building architectural features/measurements are based on architectural areas and are not taken from the strata plan. This is not an offering for purchase. Any such offering can only be made with a Disclosure Statement. E&OE.

# portico.

## C1 2 BEDROOM + 2 BATH

Interior: 685 - 692 SF | Exterior: 59 - 65 SF | Total: 744 - 757 SF



LEVEL 7



LEVEL 6



LEVEL 5



LEVEL 4



LEVEL 3



LEVEL 2

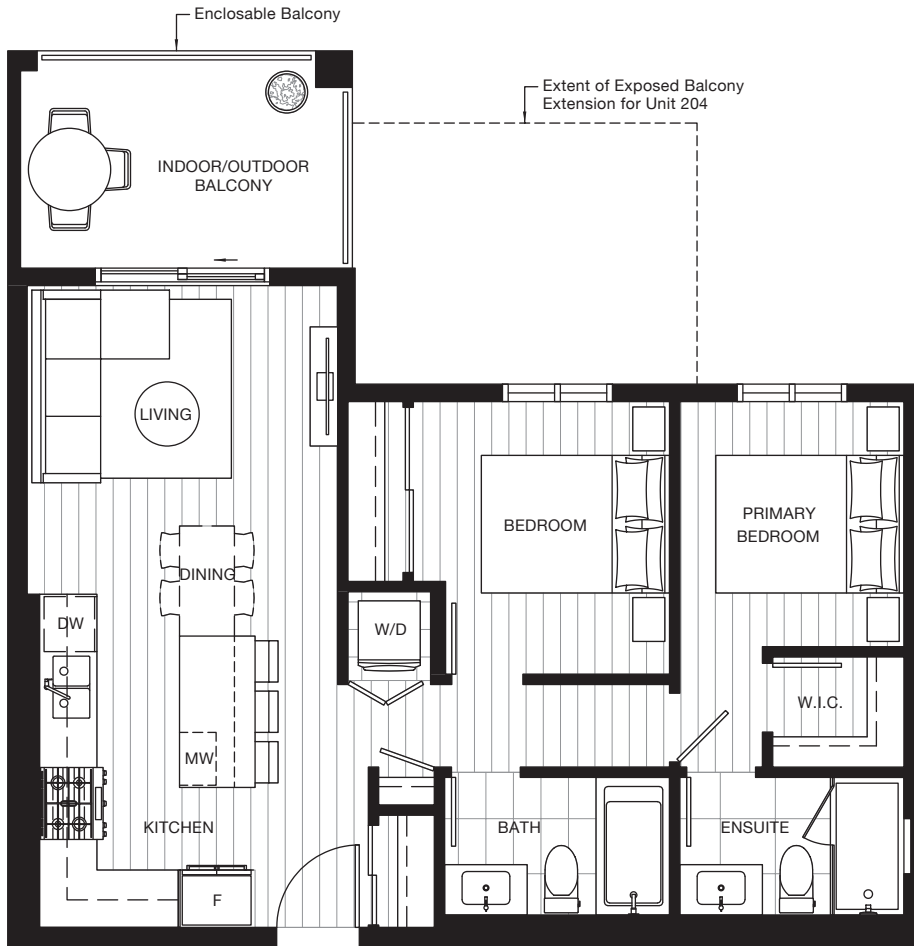


Developer reserves the right to make modifications to the floorplans, areas, unit numbers, and/or specifications without notice. Actual floorplans may be mirror image or have minor variations from the illustrations above. Views may include building architectural features/measurements are based on architectural areas and are not taken from the strata plan. This is not an offering for purchase. Any such offering can only be made with a Disclosure Statement. E&OE.

# portico.

## C2 2 BEDROOM + 2 BATH

Interior: 720 SF | Exterior: 92 - 211 SF | Total: 812 - 931 SF



LEVEL 6



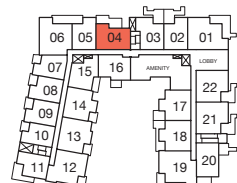
LEVEL 5



LEVEL 4



LEVEL 3



LEVEL 2



Developer reserves the right to make modifications to the floorplans, areas, unit numbers, and/or specifications without notice. Actual floorplans may be mirror image or have minor variations from the illustrations above. Views may include building architectural features/measurements are based on architectural areas and are not taken from the strata plan. This is not an offering for purchase. Any such offering can only be made with a Disclosure Statement. E&OE.



# portico.

## C3 2 BEDROOM + 2 BATH

Interior: 724 SF | Exterior: 181 - 183 SF | Total: 905 - 907 SF



LEVEL 4



LEVEL 3



Developer reserves the right to make modifications to the floorplans, areas, unit numbers, and/or specifications without notice. Actual floorplans may be mirror image or have minor variations from the illustrations above. Views may include building architectural features/measurements are based on architectural areas and are not taken from the strata plan. This is not an offering for purchase. Any such offering can only be made with a Disclosure Statement. E&OE.





# portico.

## C4 2 BEDROOM + 2 BATH

Interior: 755 SF | Exterior: 76 - 80 SF | Total: 831 - 835 SF



LEVEL 5



LEVEL 4



LEVEL 3



Developer reserves the right to make modifications to the floorplans, areas, unit numbers, and/or specifications without notice. Actual floorplans may be mirror image or have minor variations from the illustrations above. Views may include building architectural features/measurements are based on architectural areas and are not taken from the strata plan. This is not an offering for purchase. Any such offering can only be made with a Disclosure Statement. E&OE.

# portico.

## C5 2 BEDROOM + 2 BATH

Interior: 808 SF | Exterior: 137 - 149 SF | Total: 945 - 957 SF



LEVEL 7



LEVEL 6



LEVEL 5



LEVEL 4

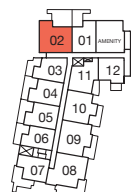
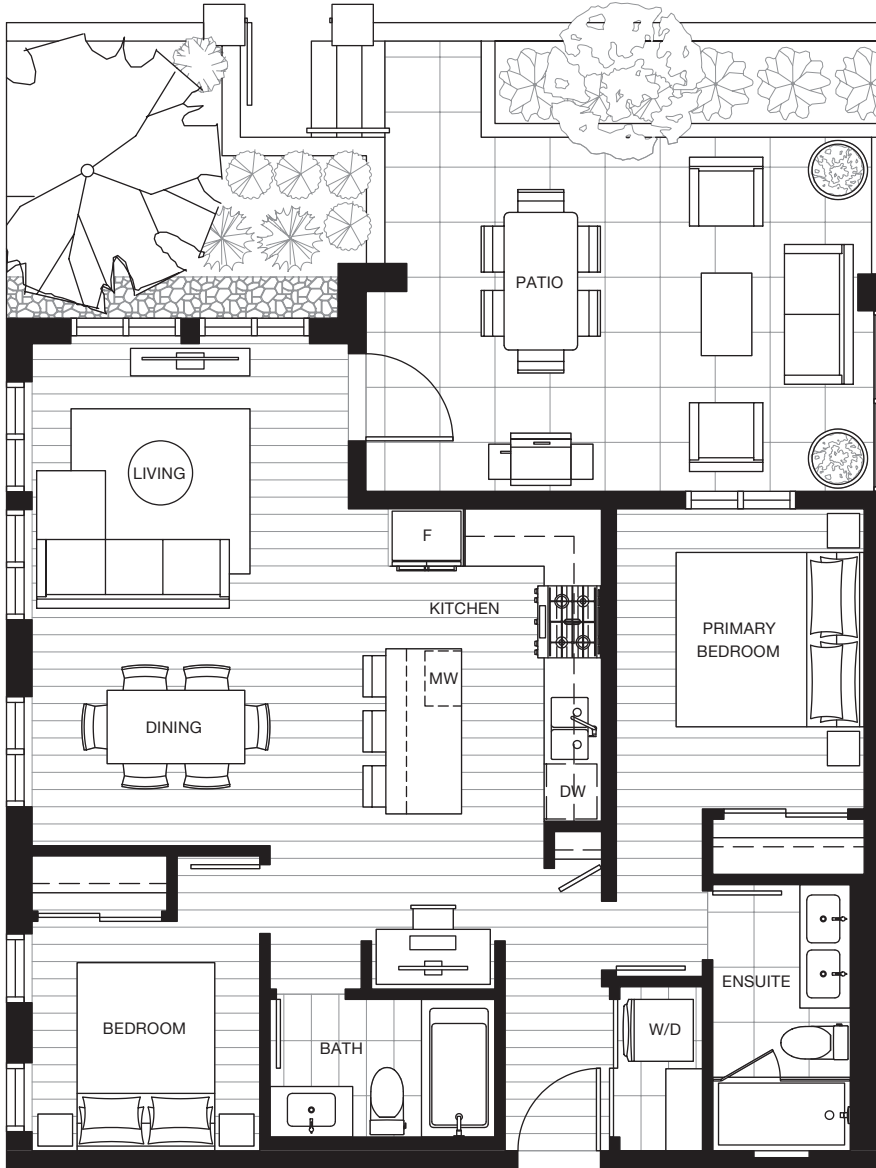


Developer reserves the right to make modifications to the floorplans, areas, unit numbers, and/or specifications without notice. Actual floorplans may be mirror image or have minor variations from the illustrations above. Views may include building architectural features/measurements are based on architectural areas and are not taken from the strata plan. This is not an offering for purchase. Any such offering can only be made with a Disclosure Statement. E&OE.

# portico.

## C6 2 BEDROOM + 2 BATH

Interior: 837 SF | Exterior: 271 SF | Total: 1,108 SF



LEVEL 1

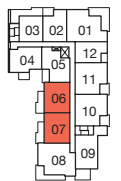


Developer reserves the right to make modifications to the floorplans, areas, unit numbers, and/or specifications without notice. Actual floorplans may be mirror image or have minor variations from the illustrations above. Views may include building architectural features/measurements are based on architectural areas and are not taken from the strata plan. This is not an offering for purchase. Any such offering can only be made with a Disclosure Statement. E&OE.

# portico.

**D 2 BEDROOM + 2 BATH + DEN**

Interior: 708 - 709 SF | Exterior: 72 - 149 SF | Total: 780 - 858 SF

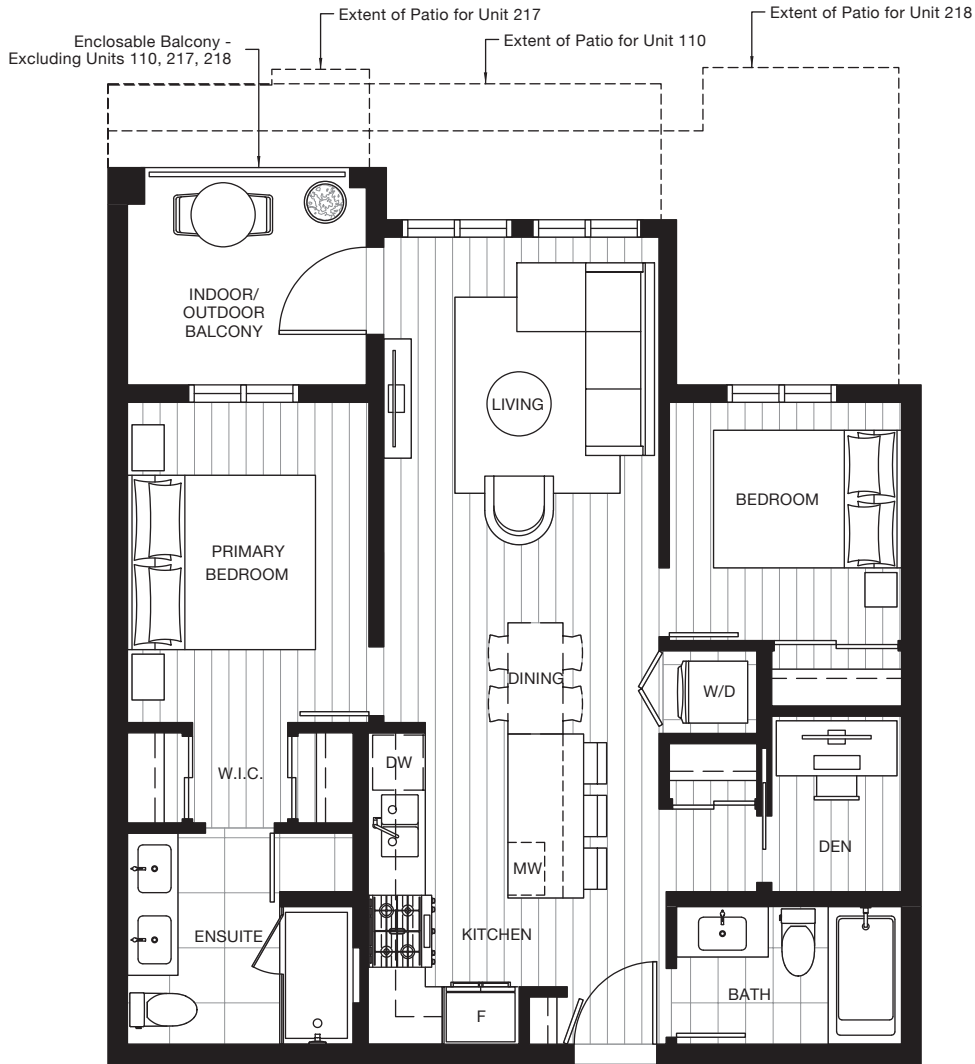


Developer reserves the right to make modifications to the floorplans, areas, unit numbers, and/or specifications without notice. Actual floorplans may be mirror image or have minor variations from the illustrations above. Views may include building architectural features/measurements are based on architectural areas and are not taken from the strata plan. This is not an offering for purchase. Any such offering can only be made with a Disclosure Statement. E&OE.

# portico.

## D1 2 BEDROOM + 2 BATH + DEN

Interior: 775 - 783 SF | Exterior: 69 - 252 SF | Total: 844 - 1,035 SF



LEVEL 6



LEVEL 5



LEVEL 4



LEVEL 3



LEVEL 2



LEVEL 1



Developer reserves the right to make modifications to the floorplans, areas, unit numbers, and/or specifications without notice. Actual floorplans may be mirror image or have minor variations from the illustrations above. Views may include building architectural features/measurements are based on architectural areas and are not taken from the strata plan. This is not an offering for purchase. Any such offering can only be made with a Disclosure Statement. E&OE.

# portico.

## D2 2 BEDROOM + 2 BATH + DEN

Interior: 849 - 857 SF | Exterior: 86 - 171 SF | Total: 935 - 1,028 SF



LEVEL 7



LEVEL 6



LEVEL 5



LEVEL 4



LEVEL 3



LEVEL 2



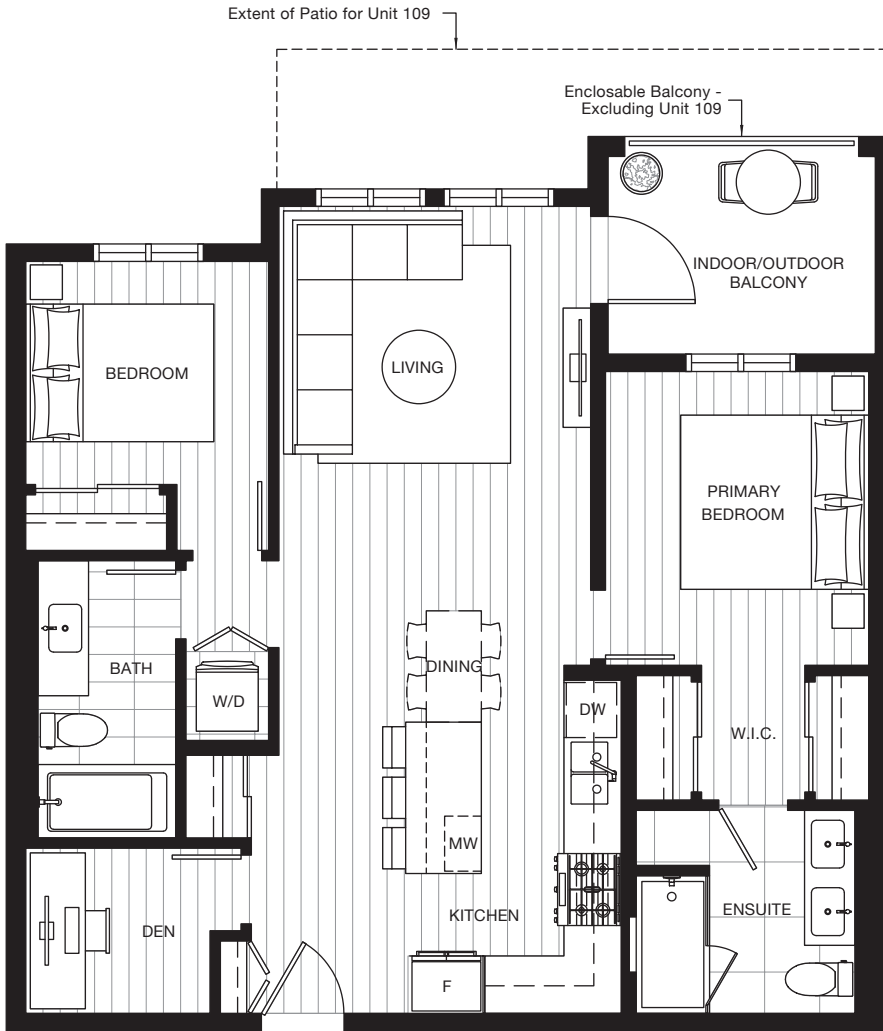
Developer reserves the right to make modifications to the floorplans, areas, unit numbers, and/or specifications without notice. Actual floorplans may be mirror image or have minor variations from the illustrations above. Views may include building architectural features/measurements are based on architectural areas and are not taken from the strata plan. This is not an offering for purchase. Any such offering can only be made with a Disclosure Statement. E&OE.



# portico.

## D3 2 BEDROOM + 2 BATH + DEN

Interior: 881 SF | Exterior: 74 - 178 SF | Total: 955 - 1,059 SF



LEVEL 6



LEVEL 5



LEVEL 4



LEVEL 3



LEVEL 2



LEVEL 1



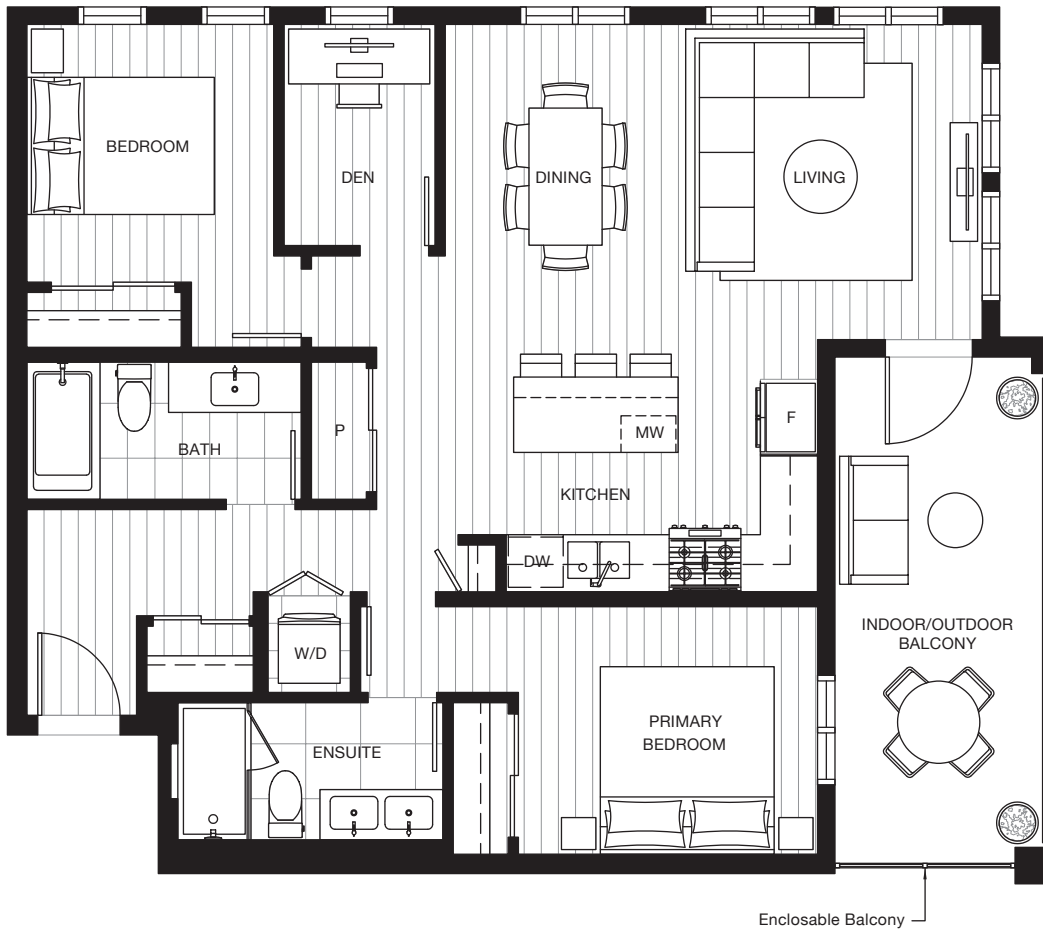
Developer reserves the right to make modifications to the floorplans, areas, unit numbers, and/or specifications without notice. Actual floorplans may be mirror image or have minor variations from the illustrations above. Views may include building architectural features/measurements are based on architectural areas and are not taken from the strata plan. This is not an offering for purchase. Any such offering can only be made with a Disclosure Statement. E&OE.



# portico.

## D4 2 BEDROOM + 2 BATH + DEN

Interior: 980 SF | Exterior: 144 - 148 SF | Total: 1,124 - 1,128 SF



LEVEL 6



LEVEL 5



LEVEL 4



LEVEL 3



LEVEL 2



Developer reserves the right to make modifications to the floorplans, areas, unit numbers, and/or specifications without notice. Actual floorplans may be mirror image or have minor variations from the illustrations above. Views may include building architectural features/measurements are based on architectural areas and are not taken from the strata plan. This is not an offering for purchase. Any such offering can only be made with a Disclosure Statement. E&OE.



# portico.

## E 3 BEDROOM + 2 BATH

Interior: 948 SF | Exterior: 188 - 294 SF | Total: 1,136 - 1,242 SF



LEVEL 6



LEVEL 5



LEVEL 4



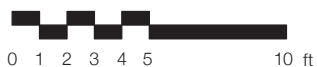
LEVEL 3



LEVEL 2



LEVEL 1



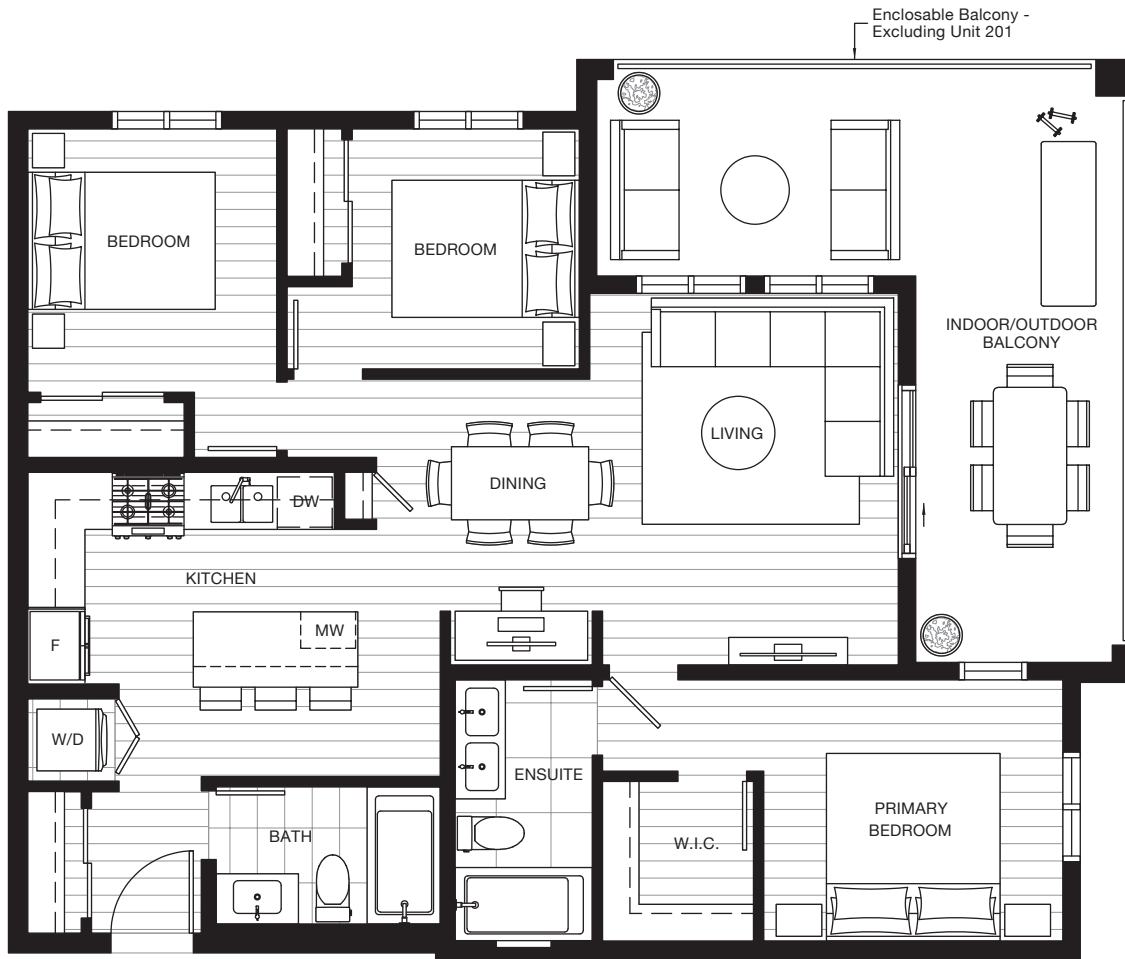
Developer reserves the right to make modifications to the floorplans, areas, unit numbers, and/or specifications without notice. Actual floorplans may be mirror image or have minor variations from the illustrations above. Views may include building architectural features/measurements are based on architectural areas and are not taken from the strata plan. This is not an offering for purchase. Any such offering can only be made with a Disclosure Statement. E&OE.



# portico.

## E1 3 BEDROOM + 2 BATH

Interior: 990 - 1,003 SF | Exterior: 243 - 287 SF | Total: 1,233 - 1,290 SF



LEVEL 7



LEVEL 6



LEVEL 5



LEVEL 4



LEVEL 3



LEVEL 2



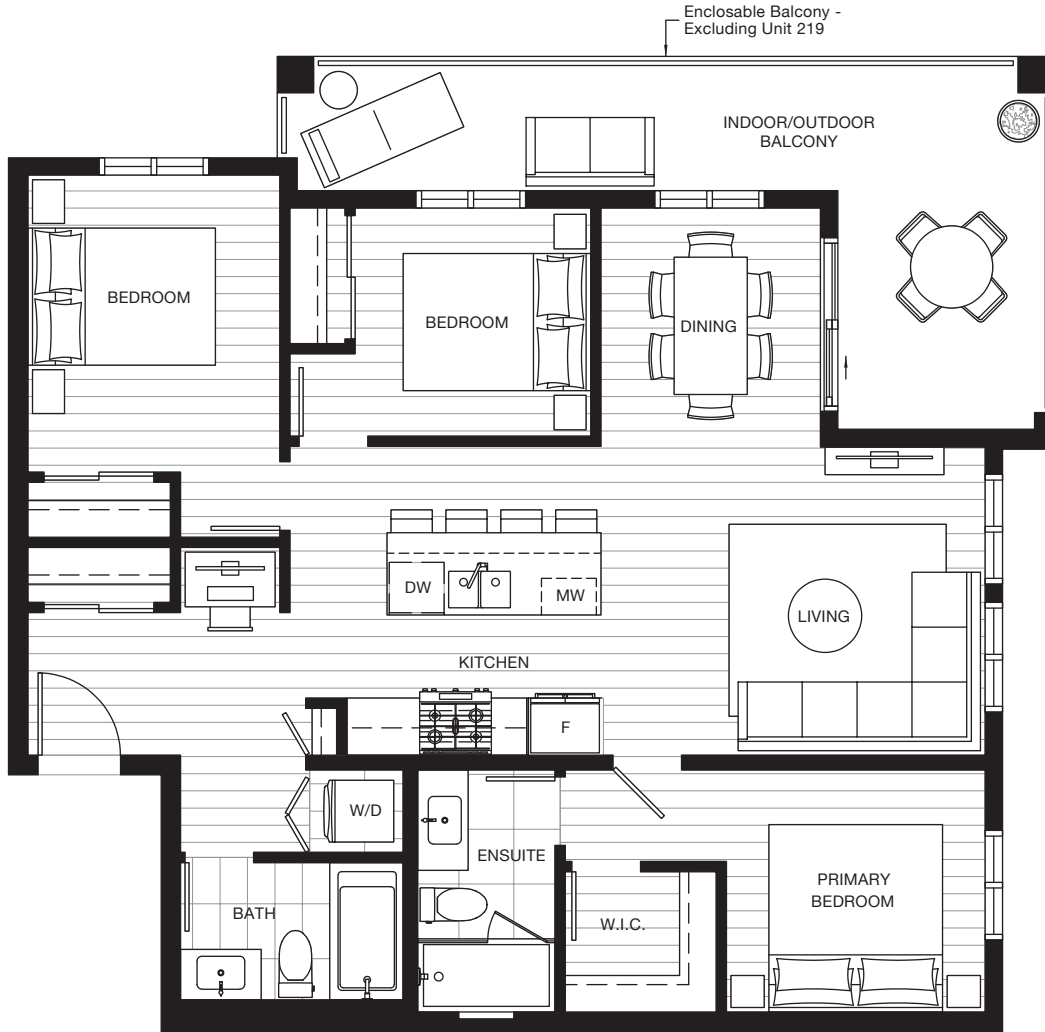
Developer reserves the right to make modifications to the floorplans, areas, unit numbers, and/or specifications without notice. Actual floorplans may be mirror image or have minor variations from the illustrations above. Views may include building architectural features/measurements are based on architectural areas and are not taken from the strata plan. This is not an offering for purchase. Any such offering can only be made with a Disclosure Statement. E&OE.



# portico.

## E2 3 BEDROOM + 2 BATH

Interior: 998 SF | Exterior: 180 - 313 SF | Total: 1,178 - 1,311 SF



LEVEL 7



LEVEL 6



LEVEL 5



LEVEL 4



LEVEL 3



LEVEL 2



Developer reserves the right to make modifications to the floorplans, areas, unit numbers, and/or specifications without notice. Actual floorplans may be mirror image or have minor variations from the illustrations above. Views may include building architectural features/measurements are based on architectural areas and are not taken from the strata plan. This is not an offering for purchase. Any such offering can only be made with a Disclosure Statement. E&OE.

