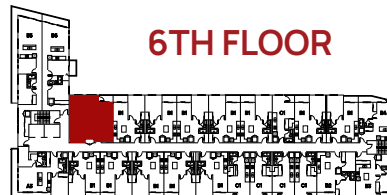
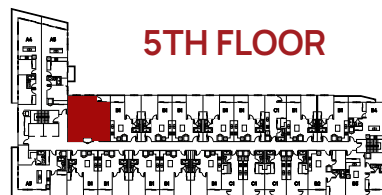
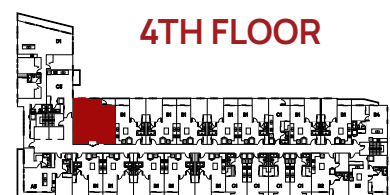
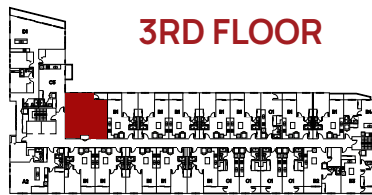
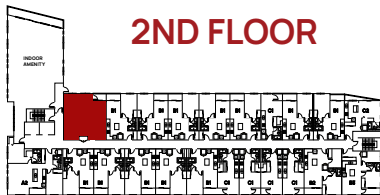
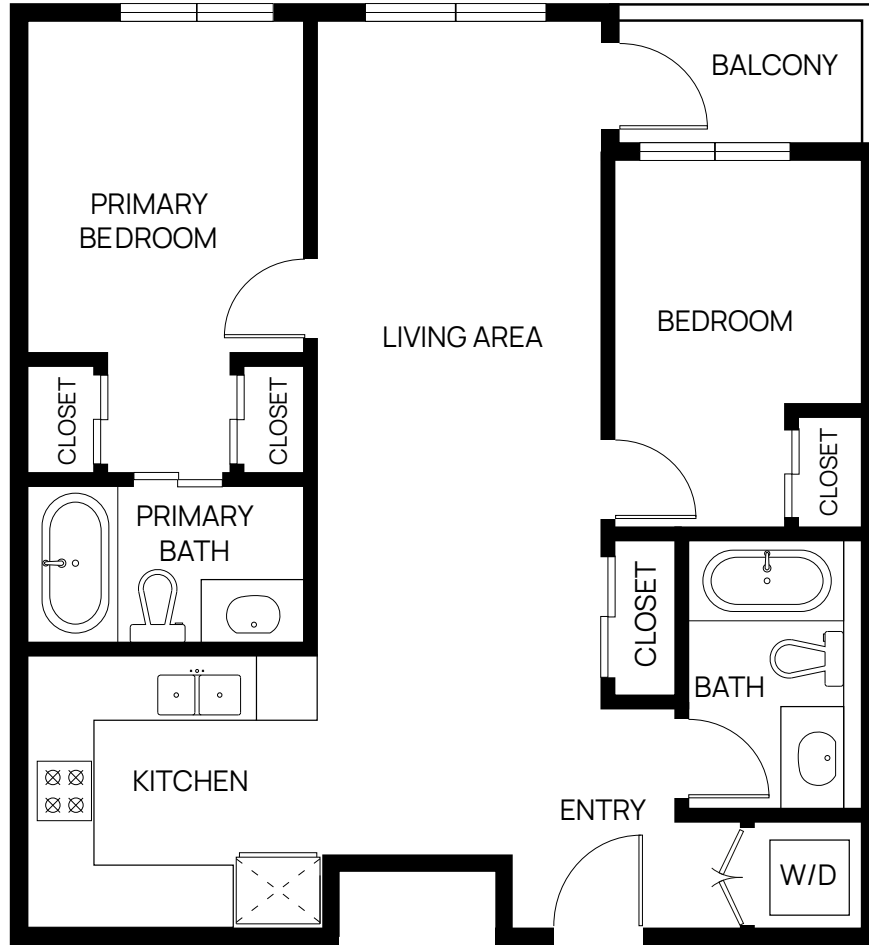


PLAN **A1**

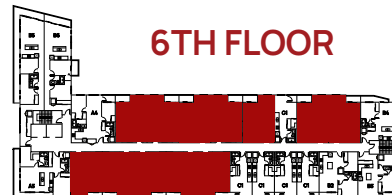
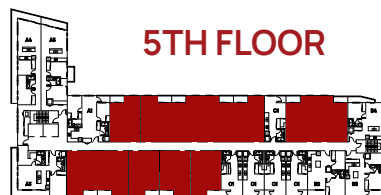
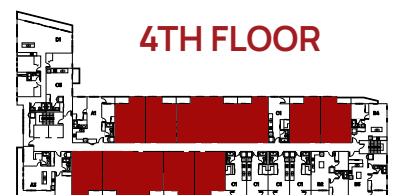
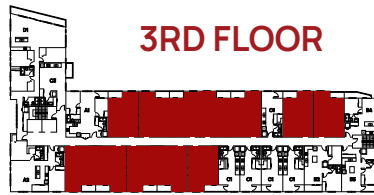
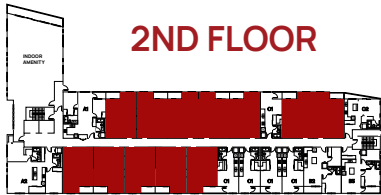
2 BED + 2 BATH  
795 SQ FT



This is not an offering for sale. Any such offering can only be made with a Disclosure Statement. Pricing and offering is subject to change without notice. The developer reserves the right to make changes, modifications or substitutes to the building design, specifications and floorplans should they be necessary. Renderings, views, and layouts are for illustration purposes only. Sales powered by Pacific Real Estate & Angell Hasman & Associates Realty LTD.

PLAN **B1**

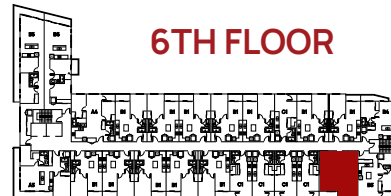
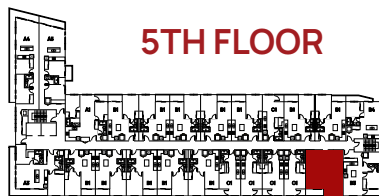
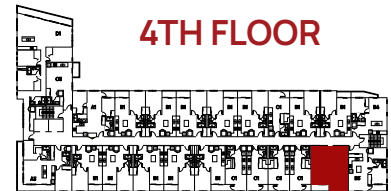
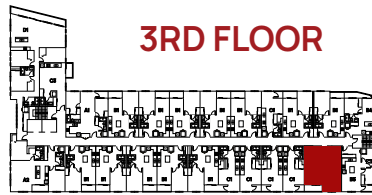
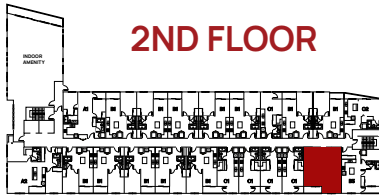
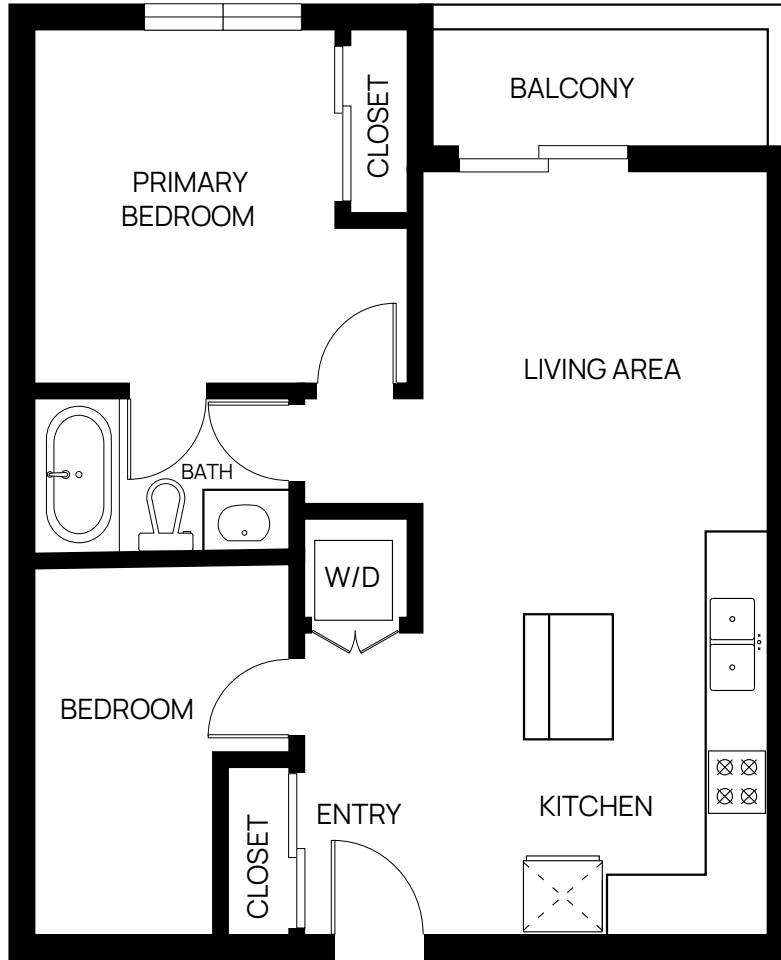
1 BED + 1 BATH  
563 SQ FT



This is not an offering for sale. Any such offering can only be made with a Disclosure Statement. Pricing and offering is subject to change without notice. The developer reserves the right to make changes, modifications or substitutes to the building design, specifications and floorplans should they be necessary. Renderings, views, and layouts are for illustration purposes only. Sales powered by Pacific Real Estate & Angell Hasman & Associates Realty LTD.

PLAN **B2**

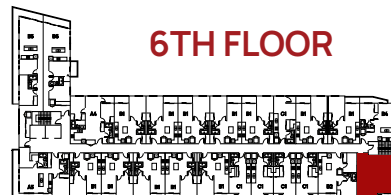
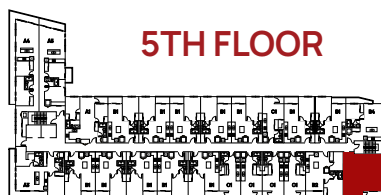
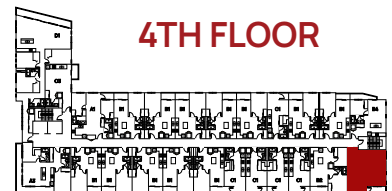
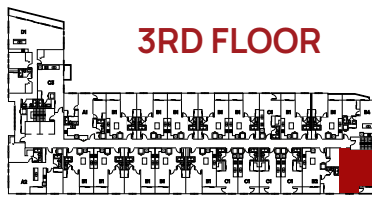
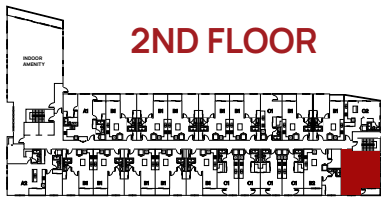
1 BED + DEN, 1 BATH  
682 SQ FT



This is not an offering for sale. Any such offering can only be made with a Disclosure Statement. Pricing and offering is subject to change without notice. The developer reserves the right to make changes, modifications or substitutes to the building design, specifications and floorplans should they be necessary. Renderings, views, and layouts are for illustration purposes only. Sales powered by Pacific Real Estate & Angell Hasman & Associates Realty LTD.

PLAN **B3**

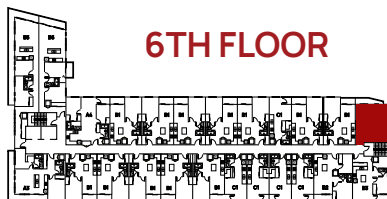
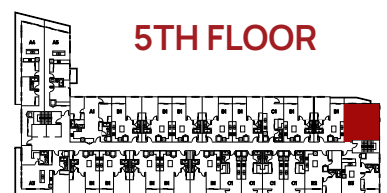
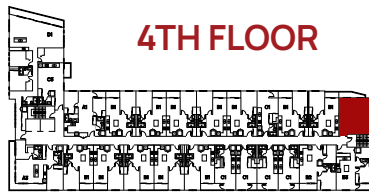
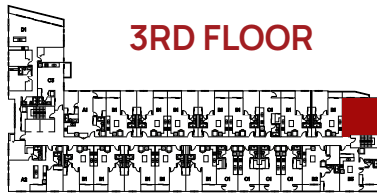
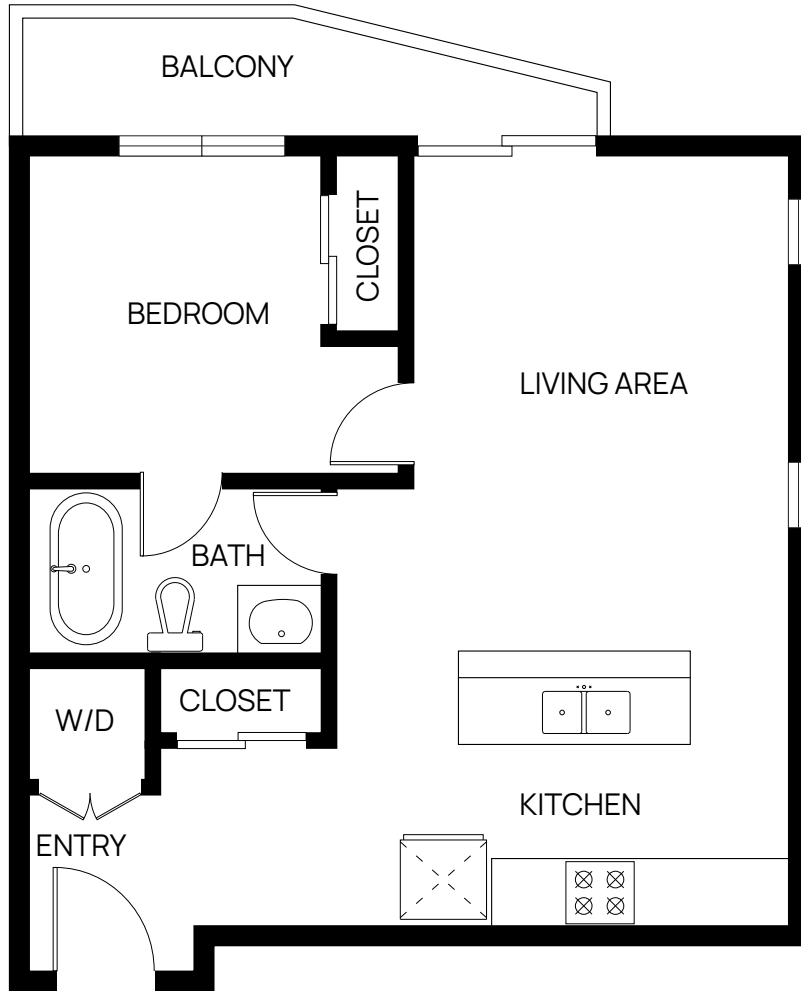
1 BED + DEN, 1 BATH  
680 SQ FT



This is not an offering for sale. Any such offering can only be made with a Disclosure Statement. Pricing and offering is subject to change without notice. The developer reserves the right to make changes, modifications or substitutes to the building design, specifications and floorplans should they be necessary. Renderings, views, and layouts are for illustration purposes only. Sales powered by Pacific Real Estate & Angell Hasman & Associates Realty LTD.

PLAN **B4**

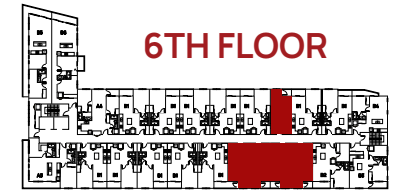
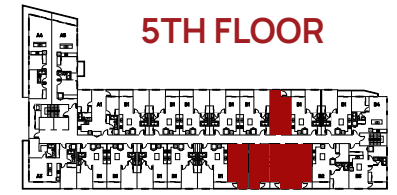
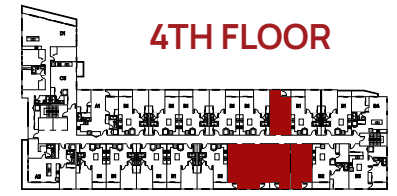
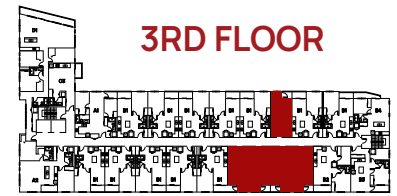
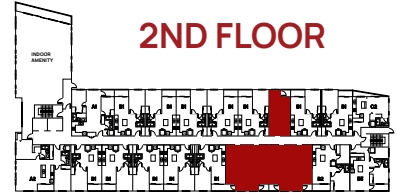
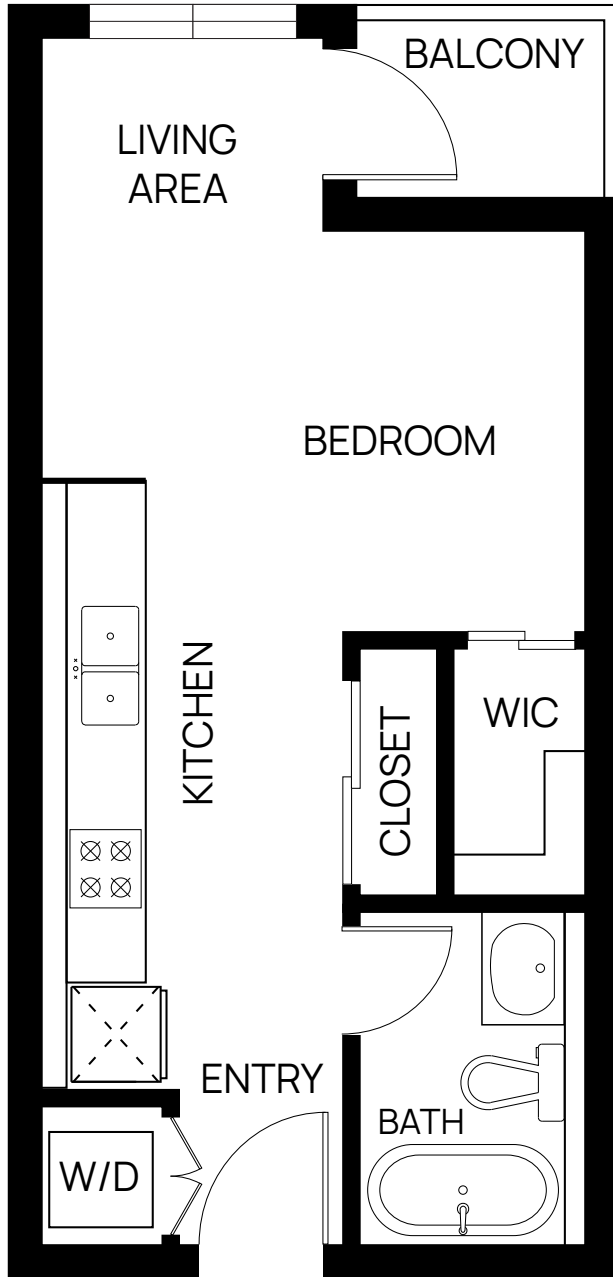
1 BED + 1 BATH  
578 SQ FT



This is not an offering for sale. Any such offering can only be made with a Disclosure Statement. Pricing and offering is subject to change without notice. The developer reserves the right to make changes, modifications or substitutes to the building design, specifications and floorplans should they be necessary. Renderings, views, and layouts are for illustration purposes only. Sales powered by Pacific Real Estate & Angell Hasman & Associates Realty LTD.

# PLAN C1

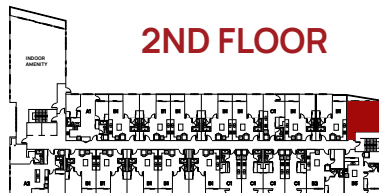
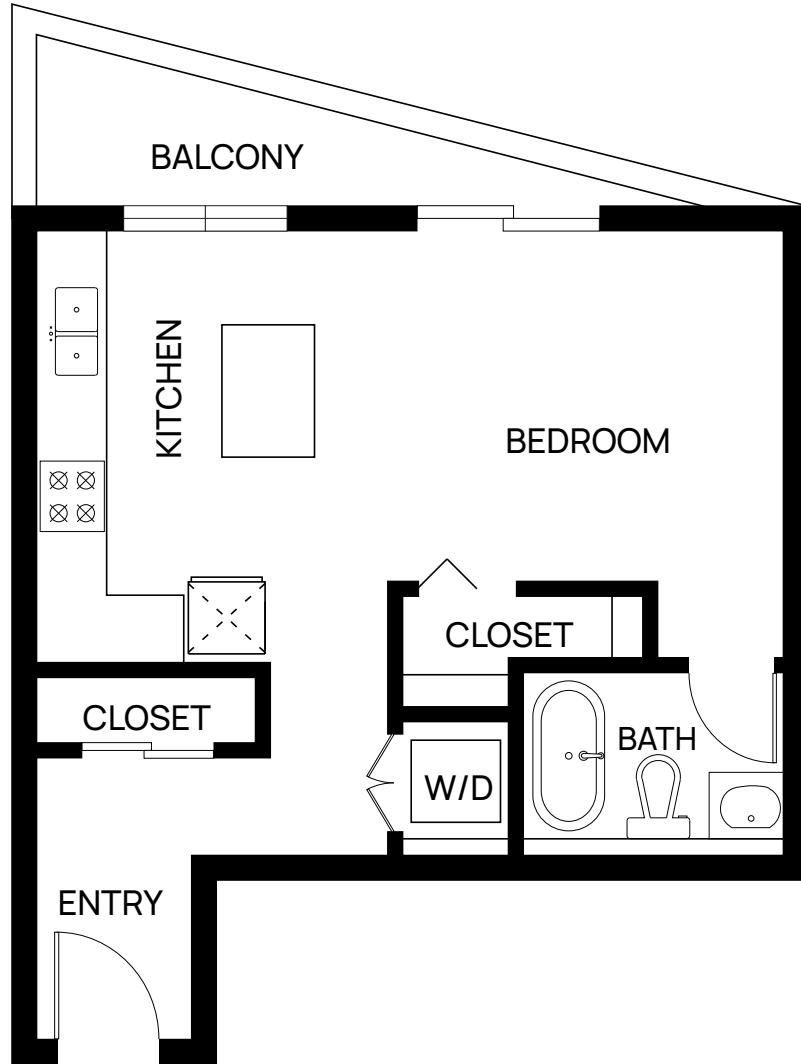
STUDIO HOME  
395 SQ FT



This is not an offering for sale. Any such offering can only be made with a Disclosure Statement. Pricing and offering is subject to change without notice. The developer reserves the right to make changes, modifications or substitutes to the building design, specifications and floorplans should they be necessary. Renderings, views, and layouts are for illustration purposes only. Sales powered by Pacific Real Estate & Angell Hasman & Associates Realty LTD.

PLAN  
**C2**

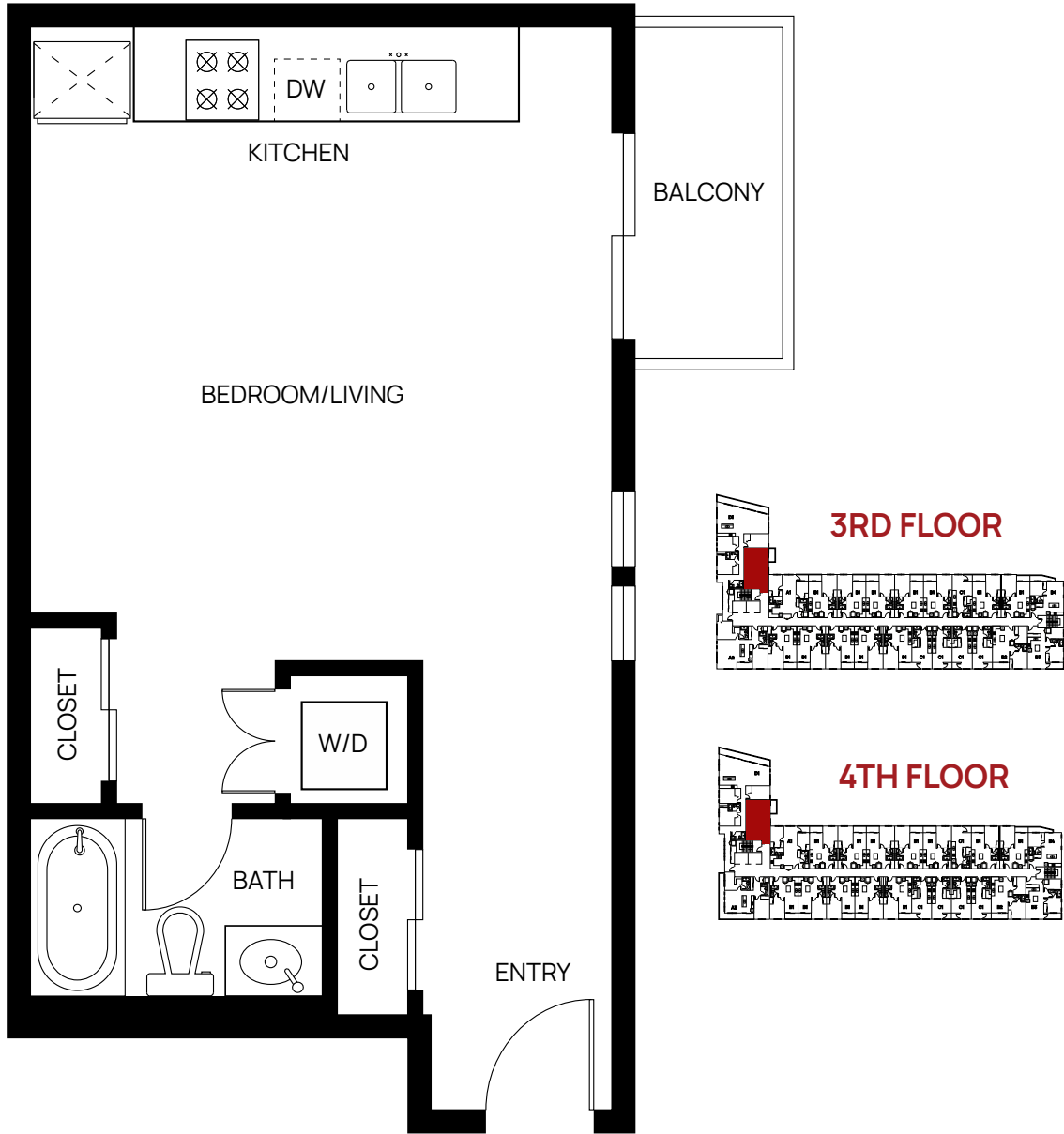
STUDIO HOME  
507 SQ FT



This is not an offering for sale. Any such offering can only be made with a Disclosure Statement. Pricing and offering is subject to change without notice. The developer reserves the right to make changes, modifications or substitutes to the building design, specifications and floorplans should they be necessary. Renderings, views, and layouts are for illustration purposes only. Sales powered by Pacific Real Estate & Angell Hasman & Associates Realty LTD.

PLAN  
**C3**

STUDIO HOME  
499 SQ FT



This is not an offering for sale. Any such offering can only be made with a Disclosure Statement. Pricing and offering is subject to change without notice. The developer reserves the right to make changes, modifications or substitutes to the building design, specifications and floorplans should they be necessary. Renderings, views, and layouts are for illustration purposes only. Sales powered by Pacific Real Estate & Angell Hasman & Associates Realty LTD.